

VARIO

e*thirteen



VARIO

e*thirteen

FEATURE OVERVIEW

- 30mm of easily adjustable travel
- Infinite travel gas spring
- Dual matte/polished finishing
- 3D forged stanchion with integrated head
- M6 T25 head hardware eliminates creaking
- 28° seat angle adjustment
- Extra 12mm of fore/aft saddle adjustment for slack bikes
- **597g** 30.9 x 150-180 | **618g** 31.6 x 150-180
- **571g** 31.6 x 120-150 | **550g** 30.9 x 120-150



THE VARIO LEVER 73g

- Light action lever with adjustable angle
- Three clamp mounting positions.
- Grip tape paddle
- High-strength custom barrel adjuster
- Single tool mounting and adjustment
- Perfectly integrates with all common brake levers



Market-proven, **gas-charged spring** allows
infinitely-adjustable travel.
20% less compression force than the
competition.

Increased key surface contact
ensures long service intervals,
and **less rotational play**
through the life of the post.

Head hardware has
28° of adjustability,
to better
accommodate
a wider range
of seat
angles.

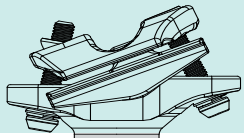
Seatpost
travel may
be reduced
up to **30mm in**
5mm increments
for versatility and
maximum drop for
all riders.

**Tool-free travel
adjustment** is
performed on the bike,
by rotating the custom top
bushing located directly
under the seatpost collar.

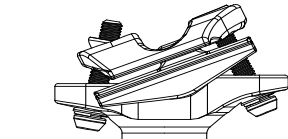
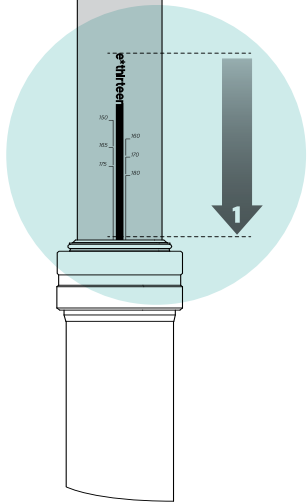
VARIO
e*thirteen

VARIO

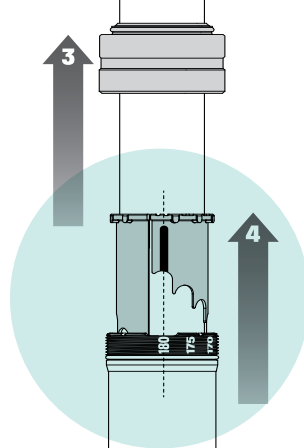
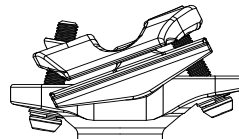
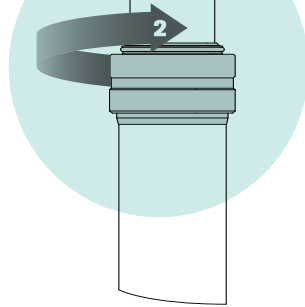
e*thirteen



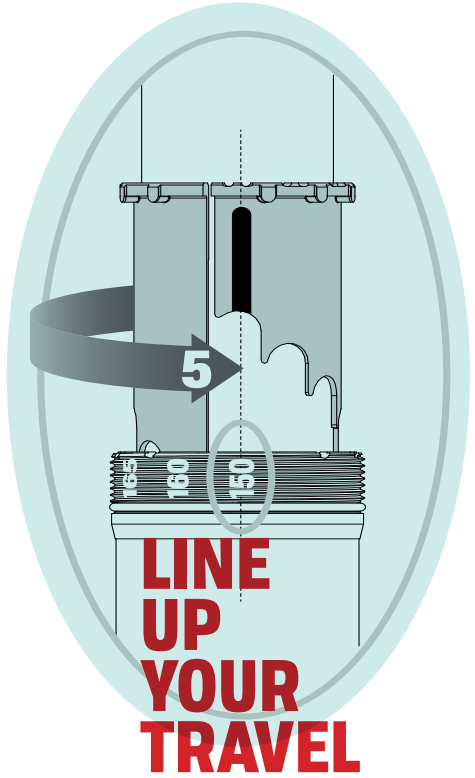
**DROP
THE
POST**



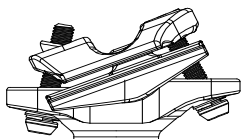
**UN-
THREAD
THE
COLLAR**



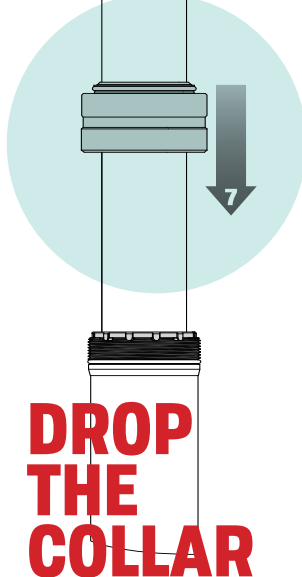
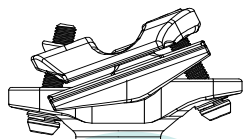
**PULL THE
BUSHING**



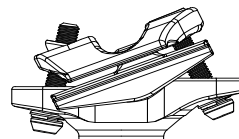
**LINE
UP
YOUR
TRAVEL**



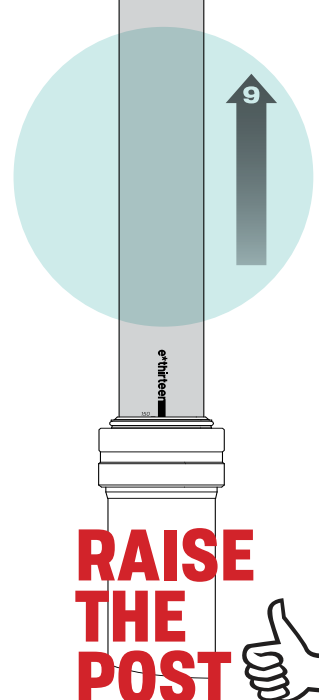
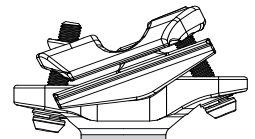
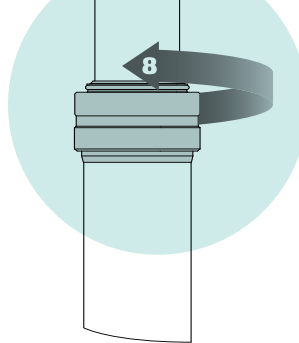
**INSTALL
BUSHING**



**DROP
THE
COLLAR**



**TIGHTEN
THE
COLLAR**



**RAISE
THE
POST**





VARIO

e*thirteen

Lever redesign maintains tactile feel and feedback of our industry-benchmark first generation lever.

3mm hex wrench adjusts the bar clamp, cable install and lever position.

3 mounting positions for the bar clamp provides better compatibility with different brake levers, and more options for rider preference.

